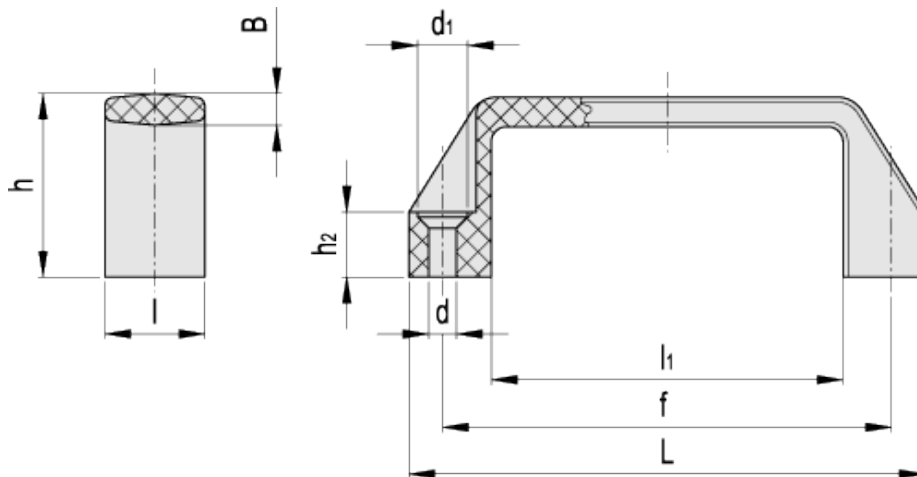


M.443 SH

Handles



ELESA Original design



technical informations

Material

Glass-fibre reinforced polyamide based (PA) technopolymer. Resistant to solvents, oils, greases and other chemical agents.

Colour

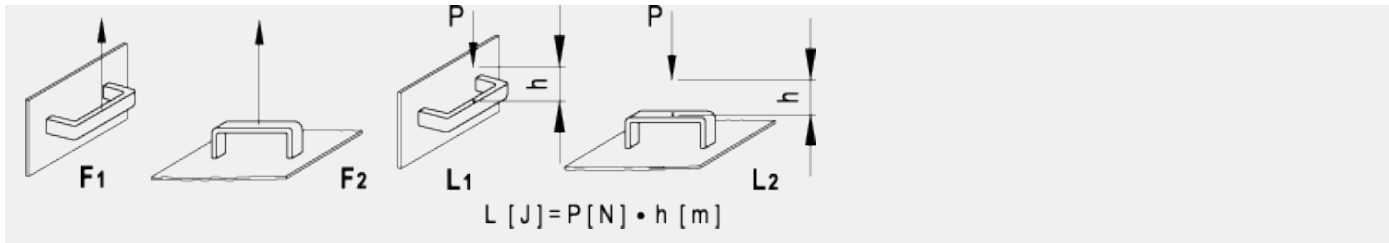
Black, matte finish.

Standard execution

Pass-through holes for countersunk head screws.

Technical data

Tensile stress and impact strength: F1, F2, L1 and L2 values reported in the table are the result of breaking tests carried out with the appropriate dynamometric equipment under the test conditions shown in the figure with ambient temperature.



Standard Elements		Main dimensions						Mounting holes			F ₁	F ₂	L ₁	L ₂	Weight
Code	Description	L	f	h	B	l	l ₁	d	d ₁	h ₂	[N]	[N]	[J]	[J]	g
37036	M.443/110-SH	109	93.5±0.5	38	6	21	74	5.5	10	13	3500	2500	15	8	24
37136	M.443/140-SH	137	117±1	41	7	26	93	6.5	12	15	4500	2500	20	13	44
37146	M.443/145-SH	142	122±1	41	7	26	100	6.5	12	15	3700	2500	25	14	45
37187	M.443/170-SH	160	140±1	46	7	27	113	6.5	12	16	3400	2600	27	20	64
37199	M.443/180-SH	172	150±1	47	7	27	125	6.5	12	17	3000	2600	27	15	54
37247	M.443/190-SH	179	160±1	50	7	28	132	6.5	12	17	3300	2700	29	20	70
37236	M.443/200-SH	196	179±1	50	7.5	28	151	6.5	12	17	3500	2700	33	20	72



ELESA and GANTER models all rights reserved in accordance with the law. Always mention the source when reproducing our drawings.

STANDARD MACHINE ELEMENTS WORLDWIDE